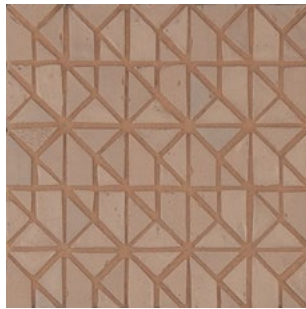




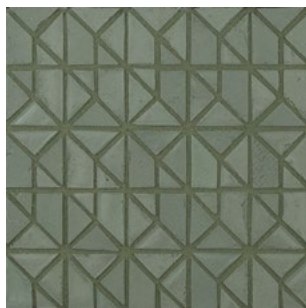
MLT 180 - Talco



MLT 240 - Salmone



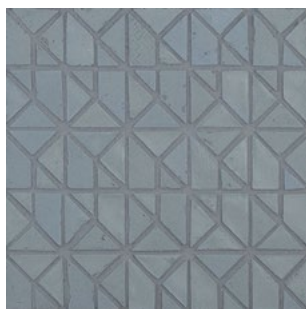
MLT 185 - Riso



MLT 250 - Salvia



MLT 190 - Cenere

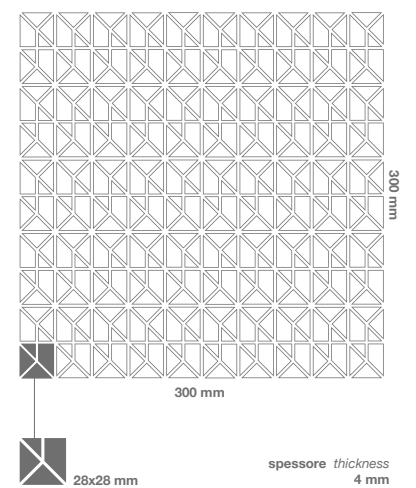


MLT 260 - Avio



MLT 200 - Grafite

Formati Size



Codice mosaico <i>Mosaic code</i>	Descrizione mosaico <i>Mosaic description</i>	Fuga consigliata* tono su tono <i>Suggested grout* tone on tone</i>	Consumo fuga - Kg / mq <i>Grout coverage - Kg / sqm</i>
MLT 180	Talco	MG - bright white 44	2
MLT 185	Riso	MG - light pewter 90	2
MLT 190	Cenere	MG - sterling silver 78	2
MLT 200	Grafite	MG - raven 45	2
MLT 240	Salmon	MG - saltillo 92	2
MLT 250	Salvia	MG - boston fern 33	2
MLT 260	Avio	MG - slate grey 91	2

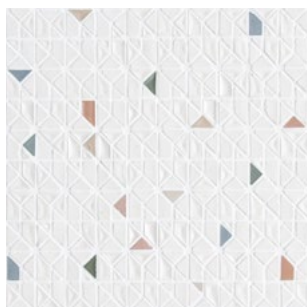
1 mq = 11 fogli 1 smq = 11 sheets

*Suggeriamo fuga epossidica *We suggest epoxy grout*

Dimensione scatola <i>Box size</i>	Dimensione fogli <i>Sheets size</i>	Fogli per scatola <i>Sheets-box</i>	mq-scatola <i>smq-box</i>	kg-scatola <i>kg-box</i>
330x330x55 mm	300x300x4 mm	9	0,81	3,9

Dimensione pallet <i>Pallet size</i>	Contenuto pallet <i>Pallet content</i>	Fogli-pallet <i>Sheets-pallet</i>	mq-pallet <i>smq-pallet</i>	kg-pallet <i>kg-pallet</i>
800x1200x880 mm	72 scatole <i>72 box</i>	648	58,32	313

Scivolosità <i>Slipperiness</i>	Resistenza agli sbalzi termici <i>Thermal shock resistance</i>	Resistenza al gelo <i>Frost resistance</i>	Resistenza agli attacchi chimici <i>Chemical resistance</i>	Resistenza alle macchie <i>Resistance to stains</i>
classe C <i>classification C</i>	resistente <i>resistant</i>	resistente <i>resistant</i>	A LA HA	resistente <i>resistant</i>
DIN 51097:1992	UNI EN ISO 10545-9:2014	UNI EN ISO 10545-12:2000	UNI EN ISO 10545-13:2017	UNI EN ISO 10545-14:2015



MLTB 280 - Coriandolo Talco

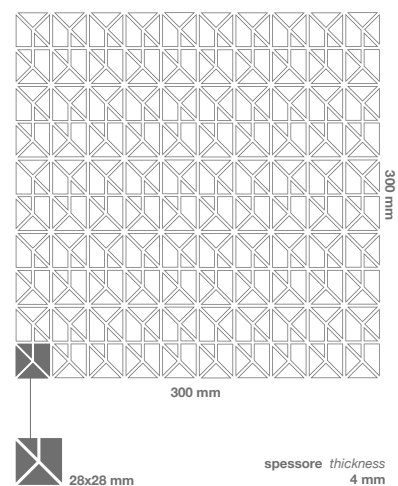


MLTB 285 - Coriandolo Cenere



MLTB 290 - Coriandolo Grafite

Formati Size





Codice mosaico <i>Mosaic code</i>	Descrizione mosaico <i>Mosaic description</i>	Fuga consigliata* tono su tono <i>Suggested grout* tone on tone</i>	Consumo fuga - Kg / mq <i>Grout coverage - Kg / sqm</i>
MLTB 280	Coriandolo Talco	MG - bright white 44	2
MLTB 285	Coriandolo Cenere	MG - sterling silver 78	2
MLTB 290	Coriandolo Grafite	MG - raven 45	2

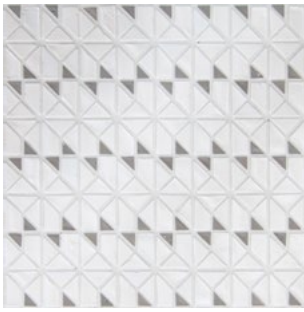
1 mq = 11 fogli 1 smq = 11 sheets

*Suggeriamo fuga epossidica We suggest epoxy grout

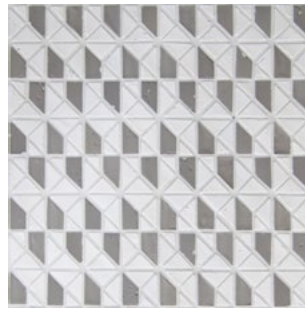
Dimensione scatola <i>Box size</i>	Dimensione fogli <i>Sheets size</i>	Fogli per scatola <i>Sheets-box</i>	mq-scatoia <i>smq-box</i>	kg-scatoia <i>kg-box</i>
330x330x55 mm	300x300x4 mm	9	0,81	3,9

Dimensione pallet <i>Pallet size</i>	Contenuto pallet <i>Pallet content</i>	Fogli-pallet <i>Sheets-pallet</i>	mq-pallet <i>smq-pallet</i>	kg-pallet <i>kg-pallet</i>
800x1200x880 mm	72 scatole <i>72 box</i>	648	58,32	313

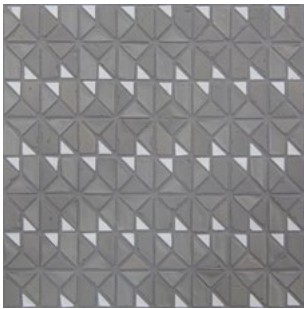
Scivolosità <i>Slipperiness</i>	Resistenza agli sbalzi termici <i>Thermal shock resistance</i>	Resistenza al gelo <i>Frost resistance</i>	Resistenza agli attacchi chimici <i>Chemical resistance</i>	Resistenza alle macchie <i>Resistance to stains</i>
classe C <i>classification C</i>	resistente <i>resistant</i>	resistente <i>resistant</i>	A LA HA	resistente <i>resistant</i>
DIN 51097:1992	UNI EN ISO 10545-9:2014	UNI EN ISO 10545-12:2000	UNI EN ISO 10545-13:2017	UNI EN ISO 10545-14:2015



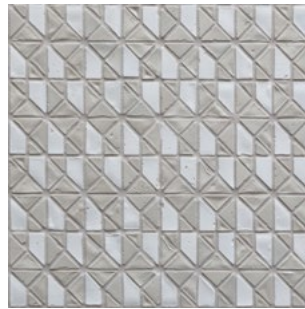
MLTD 10 - Talco_Cenere



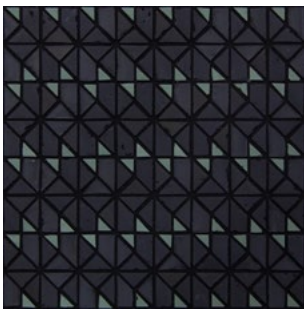
MLTD 110 - Talco_Cenere



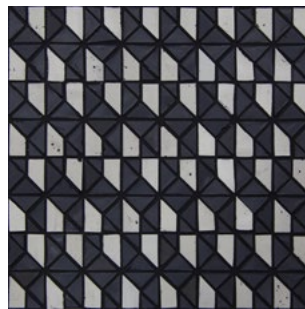
MLTD 20 - Cenere_Talco



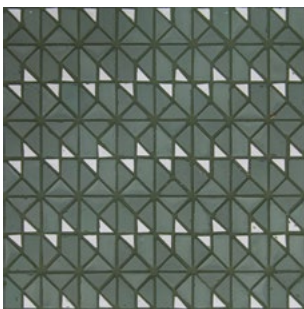
MLTD 120 - Riso_Talco



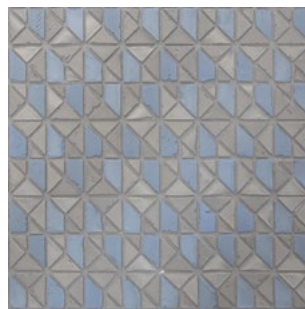
MLTD 30 - Grafite_Salvia



MLTD 130 - Grafite_Riso



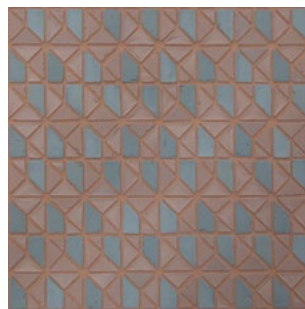
MLTD 40 - Salvia_Talco



MLTD 140 - Cenere_Avio

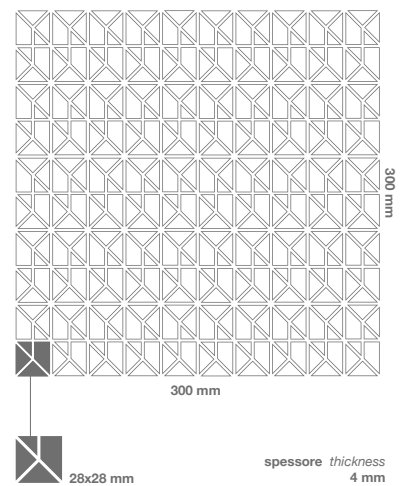


MLTD 50 - Salmone_Grafite



MLTD 150 - Salmone_Cenere

Formati Size



Codice mosaico <i>Mosaic code</i>	Descrizione mosaico <i>Mosaic description</i>	Fuga consigliata* tono su tono <i>Suggested grout* tone on tone</i>	Consumo fuga - Kg / mq <i>Grout coverage - Kg / sqm</i>
MLTD 10	Talco_Cenere	MG - bright white 44	2
MLTD 20	Cenere_Talco	MG - sterling silver 78	2
MLTD 30	Grafite_Salvia	MG - raven 45	2
MLTD 40	Salvia_Talco	MG - boston fern 33	2
MLTD 50	Salmone_Grafite	MG - saltillo 92	2
MLTD 110	Talco_Cenere	MG - bright white 44	2
MLTD 120	Riso_Talco	MG - light pewter 90	2
MLTD 130	Grafite_Riso	MG - raven 45	2
MLTD 140	Cenere_Avio	MG - sterling silver 78	2
MLTD 150	Salmone_Cenere	MG - saltillo 92	2

1 mq = 11 fogli 1 smq = 11 sheets

*Suggeriamo fuga epossidica *We suggest epoxy grout*

Dimensione scatola <i>Box size</i>	Dimensione fogli <i>Sheets size</i>	Fogli per scatola <i>Sheets-box</i>	mq-scatola <i>smq-box</i>	kg-scatola <i>kg-box</i>
330x330x55 mm	300x300x4 mm	9	0,81	3,9

Dimensione pallet <i>Pallet size</i>	Contenuto pallet <i>Pallet content</i>	Fogli-pallet <i>Sheets-pallet</i>	mq-pallet <i>smq-pallet</i>	kg-pallet <i>kg-pallet</i>
800x1200x880 mm	72 scatole <i>72 box</i>	648	58,32	313

Scivolosità <i>Slipperiness</i>	Resistenza agli sbalzi termici <i>Thermal shock resistance</i>	Resistenza al gelo <i>Frost resistance</i>	Resistenza agli attacchi chimici <i>Chemical resistance</i>	Resistenza alle macchie <i>Resistance to stains</i>
classe C <i>classification C</i>	resistente <i>resistant</i>	resistente <i>resistant</i>	A LA HA	resistente <i>resistant</i>
DIN 51097:1992	UNI EN ISO 10545-9:2014	UNI EN ISO 10545-12:2000	UNI EN ISO 10545-13:2017	UNI EN ISO 10545-14:2015

mosaicomicro.com

Made in Italy